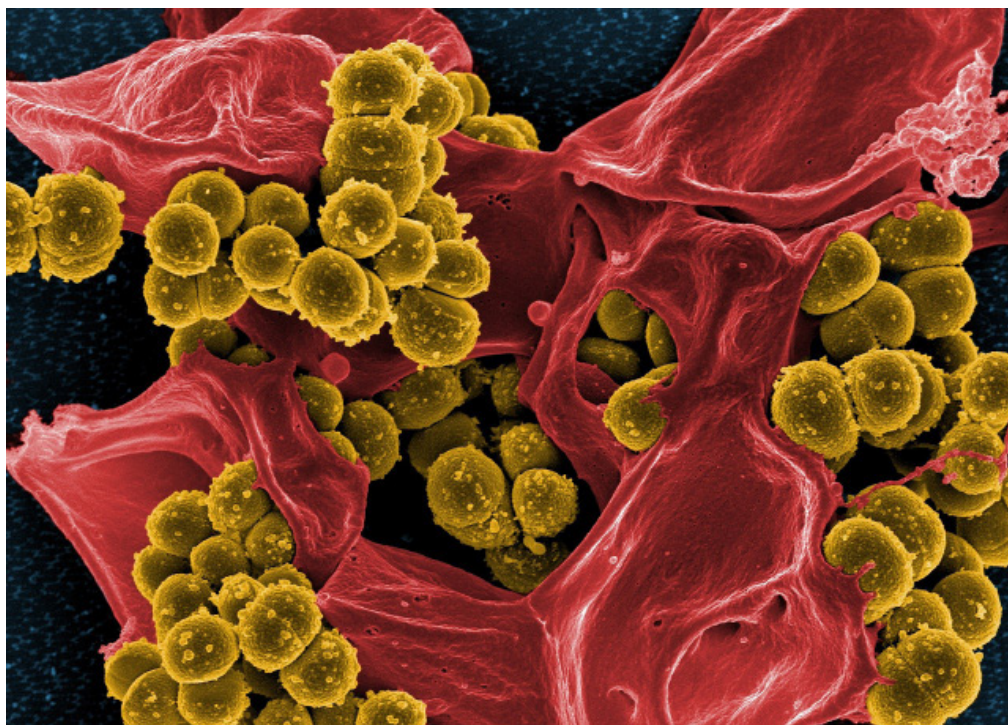


BIOCIDES PRODUCT LINE CARD

PROVIDING MICROBIAL CONTROL SOLUTIONS



Chemroy provides industrial biocides to the manufacturing sector for applications in areas such as coatings, construction, adhesives, lubricants, inks and metal working fluids. Our portfolio also includes a disinfectant for food industry applications. Chemroy's dedicated biocides specialist offers complimentary hygiene audits so we can help you maintain plant hygiene and high quality products. Chemroy Canada Inc. provides the technical insight and solutions needed to identify and resolve microbial problems.

Let us know your needs and we can help provide you with the right biocide package

EASTERN CANADA
#201, 4025 Blvd. Industriel
Laval, PQ H7L 4S3
Tel: 450.625.0505
Fax: 450.625.1734

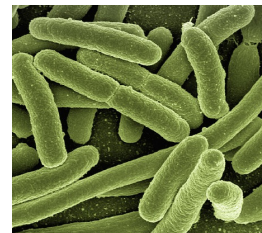
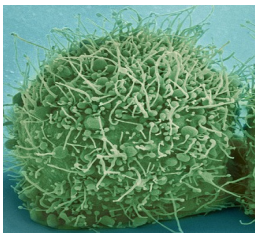
HEAD OFFICE • ONTARIO
106 Summerlea Road
Brampton On, L6T 4X3
Tel: 905.789.0701
Fax: 905.789. 7170

WESTERN CANADA
#495, 104-1015 Columbia St
New Westminster BC, V3M 6V3
Tel: 604.540.7620
Fax: 604.540.7640

IN CAN PRESERVATION

In can preservation offers long term preservation of water based products when stored inside the container during manufacturing, storage and distribution. If sufficient preservative levels are not added, microbial growth may cause liquefaction, emulsion breakdown, gassing, discoloration, pH variation and bad odour.

PRODUCT	SUPPLIER	ACTIVE INGREDIENT	PHYSICAL FORM	APPROVED APPLICATION UNDER PMRA
DOWICIL™ 75	Dow	64% CTAC	Powder	Adhesive, Construction, Detergents, Water based floor waxes and polishes, Water based inks, Latex emulsions, Laundry starch, Metal working fluid, Paint, Pulp and paper, Textiles
DOWICIL™ 75 WSB	Dow	64% CTAC	Powder	Adhesive, Construction, Detergents, Water based floor waxes and polishes, Water based inks, Latex emulsions, Laundry starch, Metal working, Paint, Pulp and paper, Textiles
DOWICIDE™ A	Dow	72% NaOPP	Flakes	Adhesives, Agricultural products, Ceramic glazes and clay slips, Chemical toilets, Construction materials, Fire extinguisher solution, Floor wax emulsions, Ink, Laundry starch, Leather, Metal working fluids, Paints, Polyvinyl alcohol, Pulp and paper, Textiles
DOWICIDE™ 1E	Dow	99.5% OPP	Flakes/ Powder	Agricultural products, Ceramics, Gaskets, Leather, Metal working fluids, Polishes
KATHON™ LX 1.5%	Dow	1.5% CMIT/ MIT	Liquid	Polymer lattices, Adhesives and paints (Aqueous paints, Inks, Adhesives, Mastics, Joint cements, Caulks, Slurries and Concrete additives)
ROCIMA™ 550	Dow	10% MIT	Liquid	Aqueous based Paints and Coatings
KORDEK™ MLX	Dow	10% MIT	Liquid	Polymer lattices and Mineral dispersions
UCARCIDE™ 225	Dow	25% Glut	Liquid	Aqueous or water containing products & systems, Paint
UCARCIDE™ 250	Dow	50% Glut	Liquid	Aqueous or water containing products & systems, Paint
Proxel™ AQ Low VOC	Lonza	9% BIT	Liquid	Latex emulsions, Aqueous based paints, Metal working fluids
Proxel™ BD20 Low VOC	Lonza	20% BIT	Liquid	Latex emulsions, Aqueous based paints, Metal working fluids, Aqueous mineral slurries
Proxel™ GXL	Lonza	20% BIT	Liquid	Latex emulsions, Aqueous based paints, Metal working fluids, Aqueous mineral slurries
Dantogard™ Preservative	Lonza	40 % DMDMH	Liquid	Liquid detergents, soft soaps, room deodorizers and air fresheners, water-based surfactants, polymer emulsions, protective and decorative coatings, water-based gels for household and industrial products, textiles, water-based adhesives, latex for paper coatings, and water-based inks.
Dantogard™ Plus Preservative	Lonza	95% DMDMH + 5% IPBC	Powder	
Dantogard™ XL 1000	Lonza	100% DMDMH	Powder	



DRY FILM PRESERVATION

Surface coatings require dry film protection when applied on external walls to protect them from microbial contamination incidence. This is necessary due to environmental conditions like high humidity and UV light. The inadequate addition of dry film preservatives will lead to discoloration, caulking and flaking of exterior paint film.

PRODUCT	SUPPLIER	ACTIVE INGREDIENT	PHYSICAL FORM	APPROVED APPLICATION UNDER PMRA
AMICAL™ 48	Dow	95% DIMTS	Powder	Exterior latex paint, Interior latex paint, Pigment dispersions, Latex caulks and adhesives.
AMICAL™ Flowable	Dow	40% DIMTS	Liquid	Exterior latex paint, Interior latex paint, Pigment dispersions, Latex caulks and adhesives.
ROZONE™ 2000	Dow	20% DCOIT	Liquid	Exterior latex paint
BIOBAN™ O 45 <i>(FKA SKANE™ M8)</i>	Dow	45% OIT	Liquid	Exterior latex and solvent based coatings, Building materials, Wallpaper pastes and adhesives, Aqueous adhesive and tackifier preservation. (Cost effective when used with ZNO.)
Omacide® 30	Lonza	30% IPBC	Liquid	Exterior latex paint, Interior latex paint, Antisapstain, Millwork
Omacide® 40	Lonza	40% IPBC	Liquid	Exterior latex paint, Interior latex paint, Antisapstain, Millwork
Omacide® 100	Lonza	>97% IPBC	Powder	Exterior latex paint, Interior latex paint, Antisapstain, Millwork
Sodium Omadine® 40	Lonza	40% NaPT	Liquid	Paints and grouts, Adhesives, Caulks, Patching compounds, Sealants, Gypsum wallboard
Densil® C98	Lonza	98% CTL Chlorothalonil	Powder	Fungicide for Interior/exterior latex based paints and solvent based paints.

INDUSTRIAL PLANT HYGIENE

Plant hygiene products when added to raw materials, slurries and emulsions during manufacturing process minimize the microbial load in your finished product.

PRODUCT	SUPPLIER	ACTIVE INGREDIENT	PHYSICAL FORM	APPROVED APPLICATION UNDER PMRA
DOWICIL™ QK20	Dow	20% DBNPA	Liquid	Non food contact raw materials and or products such as aqueous paints and coatings, pigment slurries, adhesives, latex and resin emul-sions, sizing, caulks. Specialty industrial products (Inks, Polishes, Waxes). Emulsions, Suspensions and slurries used during manufacturing of paints, latex, emulsions, adhesives, joint compounds, waxes, polishes and inks.

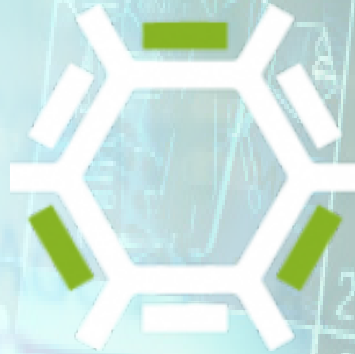
DISINFECTANTS FOR FOOD INDUSTRY

Disinfection of food processing and manufacturing equipment, floors and other hard surfaces ensures proper sanitization and protection against pathogens, viruses and contaminants.

PRODUCT	SUPPLIER	ACTIVE INGREDIENT	PHYSICAL FORM	APPROVED APPLICATION UNDER PMRA
Vantocil™ IB	Lonza	20% PHMB	Liquid	A sanitizer for use on hard non-porous and precleaned surfaces of food processing equipment, containers and utensils in food plants. Can be used for both open plant & Clean in Place (CIP) applications.



**PLANT HYGIENE AUDITS
CHALLENGE TESTING**



MICROBIAL PROBLEM RESOLUTIONS



RELIABLE SOURCE + DELIVERY



Visit us at www.chemroy.com to learn more about
• Our Products • Our Services • Our Suppliers